

METER CALIBRATION

LOW SPEED LEVEL

HIGH SPEED LEVEL

LOW SPEED HIGH FREQ. EQ

UP NAB DOWN C.CIR

HIGH SPEED HIGH FREQ. EQ

HEAD COMPENSATION (BOTH SPEEDS)

HIGH SPEED BIAS

LOW SPEED BIAS

mark
evinson audio systems, ltd

55 circular avenue hamden connecticut 06514 usa

TOLERANCES
UNLESS SPECIFIED

FRACTION $\pm .010$

DECIMAL $\pm .005$

ANGLE $\pm \frac{1}{2}^\circ$

MATERIAL

SHEET

OF

DR. A.M. DATE 7/19/78

CH. DATE

USED IN

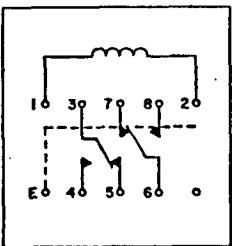
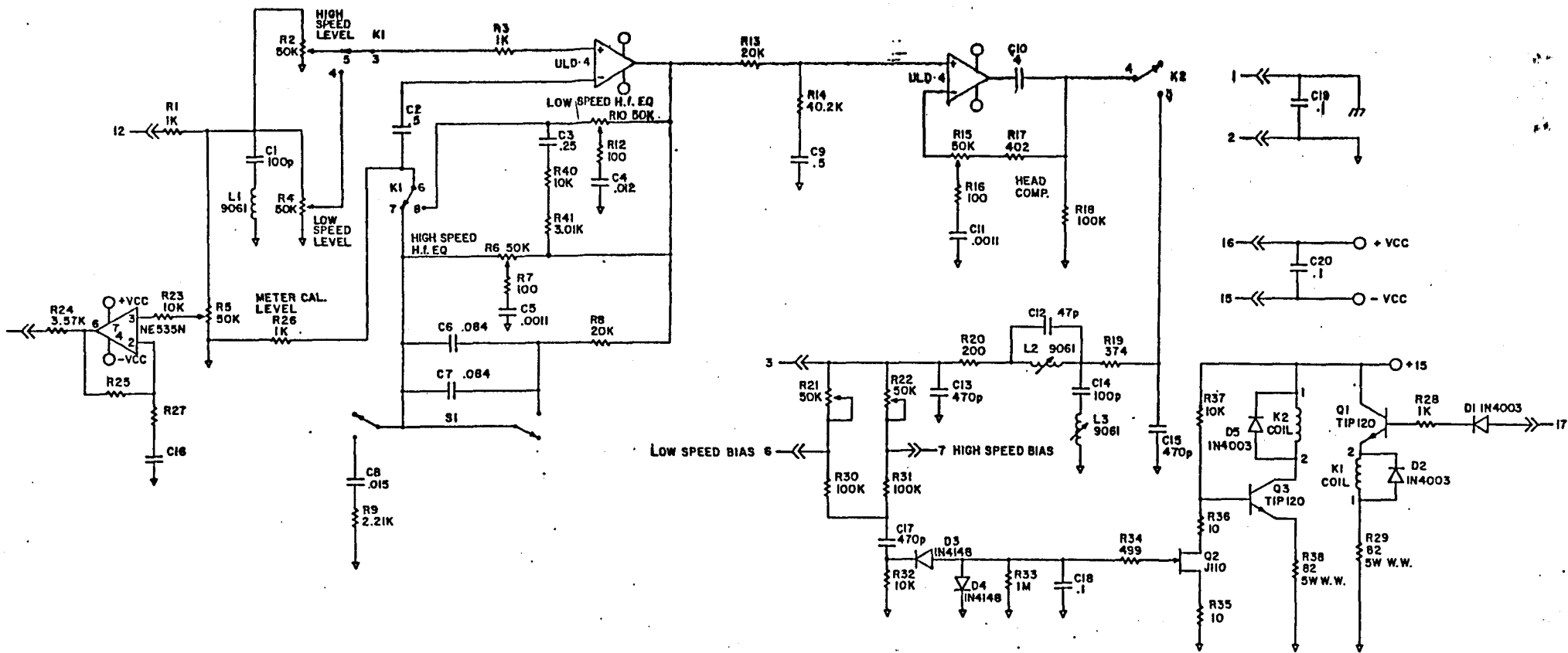
STUDER 7.5/15

NO.

DATE SCALE

NAME

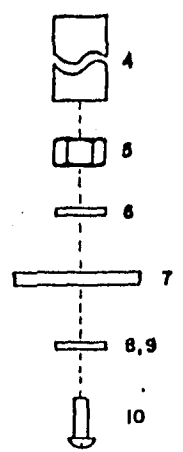
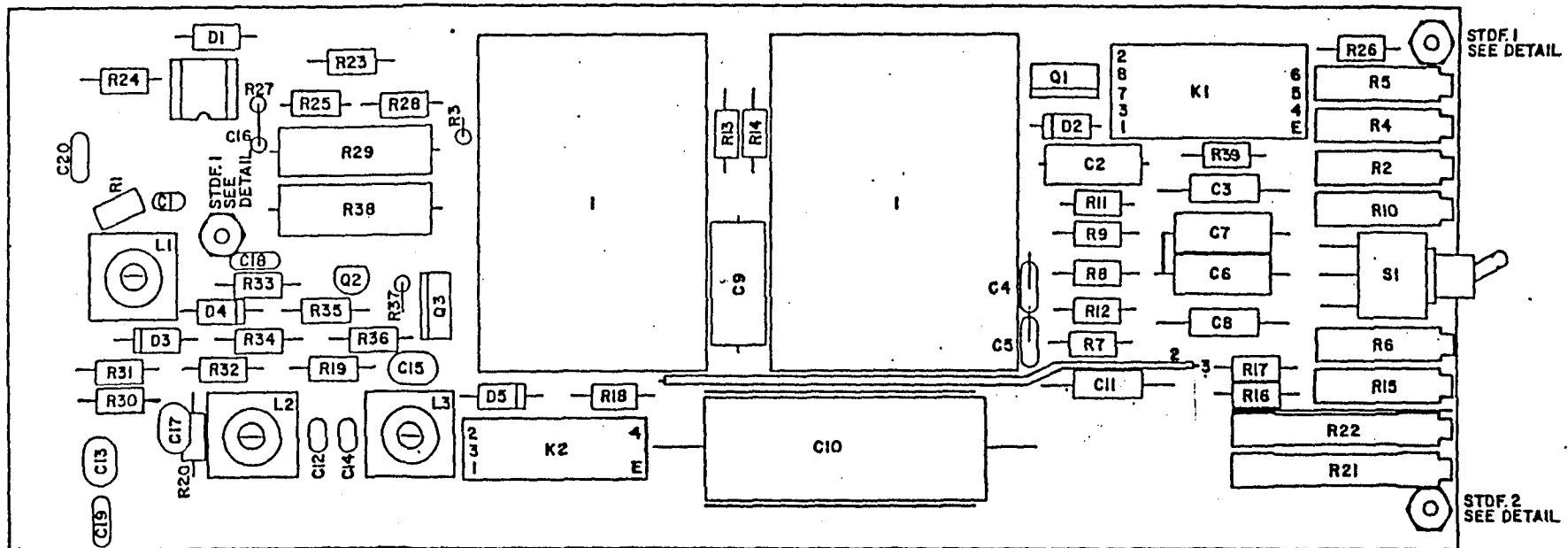
RECORD CARD




RELAY PIN OUT

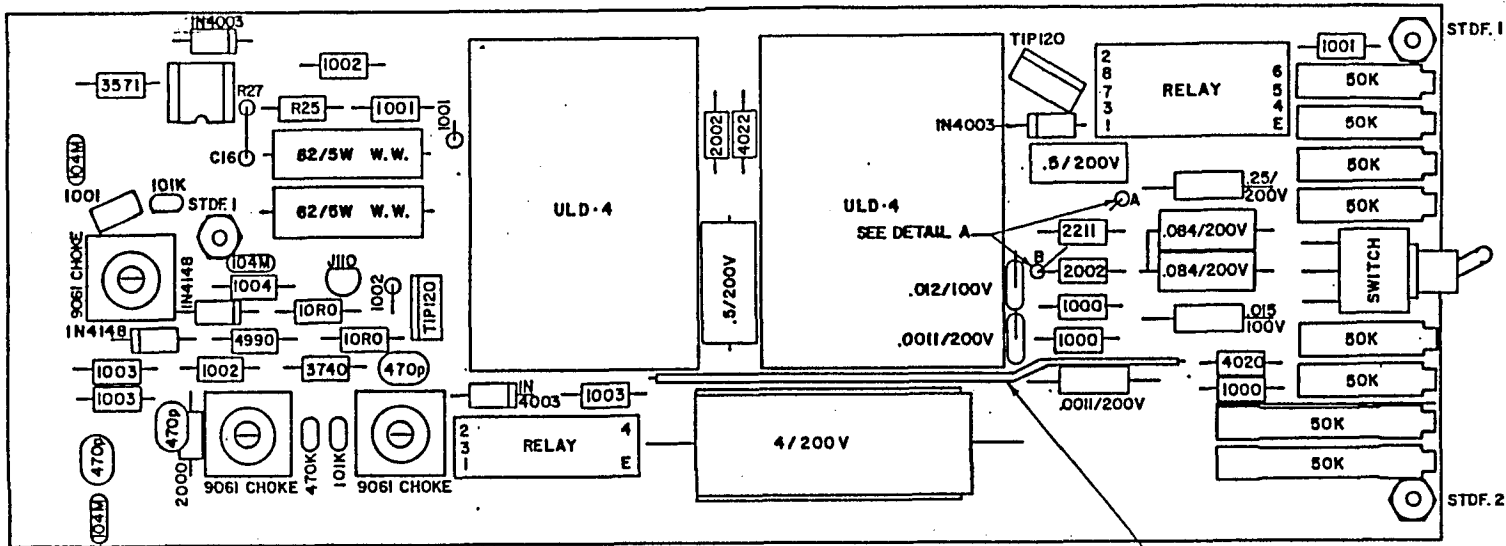
PART	REMARKS
C10	POLYCARB./SHIELDED
C13	MICA
C15	MICA
C16	NOT COMPLETED FOR OPERATION ON STOCK CARDS.
R25	.
R27	.

TOLERANCES UNLESS SPECIFIED		mark evinson audio systems, inc.	
FRACTIONAL 1/100		33 greenwood avenue, cambridgeport, MA 01946	
DECIMAL 1/100		MATERIAL	
ANGLE 1/2°		SHEET OF	
DR. DATE	USED IN	A B C D E F	
CH. DATE	ML-5	NO.	
ISSUE	REVISION	DATE	SCALE
NAME		RECORD CARD 7.5/15	

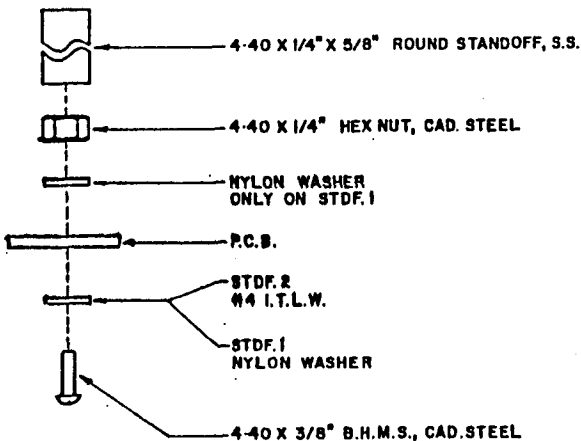


NOTE:
 1 R25,R27,C16 NOT COMPLETED FOR OPERATION ON STOCK CARDS.

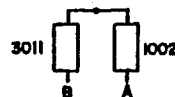
		TOLERANCES UNLESS SPECIFIED		 audio systems, ltd	
		FRACTION 1/100			
		DECIMAL 1.000		MATERIAL	
		ANGLE 1/16"		SHEET OF	
		DATE 12-2-83		A B C D E F G H	
		DATE		ML-8	
ISSUE		REVISION		NAME	
		DATE		SCALE	
				RECORD CARD 15/30	



22 AWG. BUSS WIRE
 TEFLON TUBING



DETAIL A



NOTE:
 1 R25, R27, C16 NOT COMPLETED FOR OPERATION ON STOCK CARDS.

		TOLERANCES UNLESS SPECIFIED		mark evinson Audio Systems, Inc.	
		FRACTION 1/16		33 or over unless otherwise connected 0.001000	
		DECIMAL 1/100		SHEET 07	
		ANGLE 1/8°		A B C D E F	
		DATE 7-22-83		USED IN ML-5	
		DATE		NAME	
REVISION		DATE		SCALE	
				RECORD CARD 7.5/15	